

A close-up, high-angle shot of dark blue, choppy water. The surface is covered in small, rhythmic ripples and waves, creating a textured appearance. The lighting is somewhat dim, giving the water a deep, almost blackish-blue hue. In the center of the frame, the word "MICHISAN" is written in a clean, white, sans-serif font. The letters are evenly spaced and stand out sharply against the dark, textured background of the water.

MICHISAN



Michisan luxury Yacht across The Balearic Islands

Reserve your dream vacation on a luxury yacht and sail around Denia, Ibiza, Formentera, Mallorca and Menorca, or any place you desire. Michisan's stabilizers ensure a comfortable experience at anchor and during cruising.



GUESTS

8 People



EXTRA

Toys and Tender



CABINS

4+2



LOCATION

Denia – The Balearic Islands



CREW

4



LENGTH

27.60 m - 90 ft 6 in



Michisan

Michisan offers exceptional fuel efficiency, cruising at 29 knots. Enjoy smooth sailing and experience the perfect combination of performance, comfort and luxury in the Balearic Sea.



Exterior Features

This yacht's luxurious exterior features, from bow to flybridge, offer the finest Balearic experience. A hydraulic garage transforms into a "Beach Club" with sun loungers, ideal for watersports or sunset drinks.

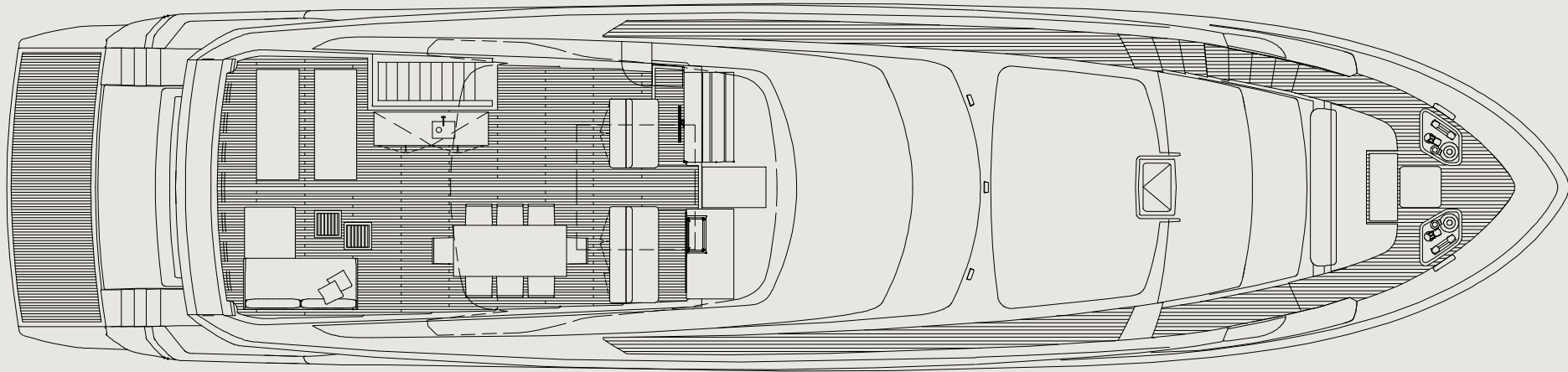


Interior Features

Experience a modern, elegant interior accommodating 8 guests in four en-suite cabins. The saloon, bathed in natural light from expansive windows, offers a relaxed and cozy atmosphere. Enjoy luxurious comfort and sophisticated design throughout.

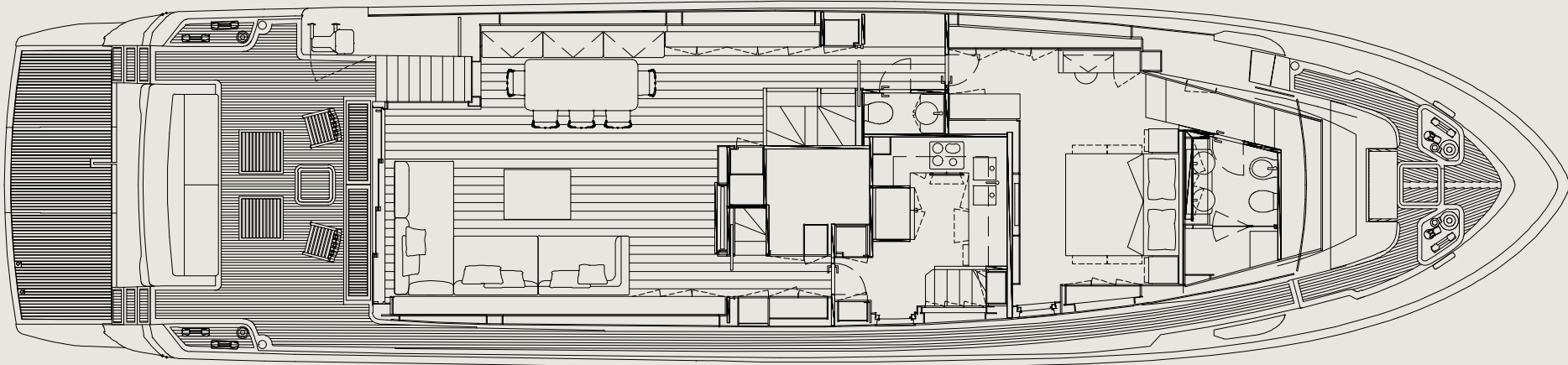
Fly Bridge

Aerial view of the bow, stern, and fly bridge.



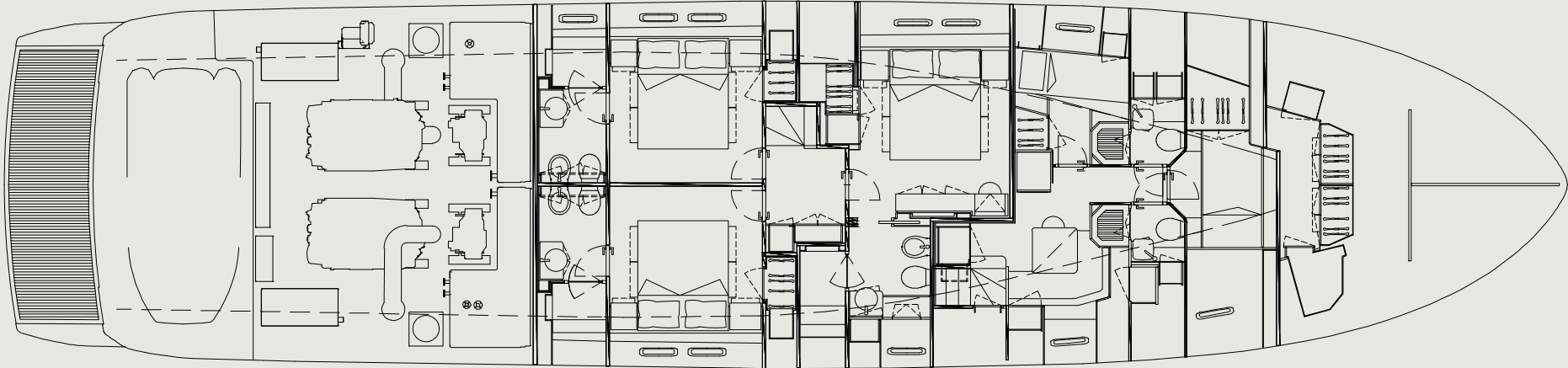
Main Deck

Aerial view of the main deck: galley, saloon and terrace.



Lower Deck

Aerial view of the lower deck: swimming platform, garage, crew cabins, and guests' cabins.







SEABOBS

2 x F9S



TENDER

Williams 435 Sportjet



JETSKI

Sea-Doo GTX Limited 325



JETSKI DOCK

Yachtbeach Platform 4.10
Premium Teak



Main Technical Specifications



LENGTH OVERALL	27,60 m - 90 ft 6 in
HULL LENGTH	23,97 m - 78 ft 6 in
BEAM	6,50 m - 21 ft 4 in
DRAFT @ FULL LOAD	1,93 m - 6 ft 4 in
DISPLACEMENT	95 t - 209400 lb
WINDLASS	2 × 2.4 kW electric
CONSTRUCTION HEIGHT	2,96 m - 9 ft 8 in
DISPLACEMENT @ HALF LOAD	95 t - 209400 lb
WATERLINE LENGTH @ HALF LOAD	22,65 m - 74 ft 3 in
TENDER LENGTH	Max 4,35 m - 14 ft 3 in
TENDER WEIGHT	Max 700 kg - max 1543 lb
GROSS TONNAGE	~95 GT

Project



BUILDER	Sanlorenzo
MODEL	Sanlorenzo SL90A
BUILT	2026
BUILDING MATERIAL	Fiber
EXTERIOR DESIGNER	Zuccon International Project
INTERIOR DESIGNER	Laura Cesca (Sanlorenzo)
FLAG	Spanish
PASSARELLE	Besenzoni: Hydraulic, telescopic
RADAR ARCH	Carbon-fibre hard-top arch
HULL COLOR	White
HULL NUMBER	880

Performance



ENGINES	2 x MAN 12V - 2000 HP
MAXIMUM SPEED	29 knots
CRUISING SPEED	25 knots
ECONOMICAL SPEED	10 kn
MAX RANGE @ ECONOMICAL SPEED	1100 nm
FUEL CONSUMPTION	~540 l/h
POWER OUTPUT @ 100% MCR	2 x 1471 kW @ 2300 rpm
GEARBOX	2 x ZF 3055V
TRANSMISSION	V-drive
PROPELLER	4 blades NiBrAl
SHAFTS	In Aquamet 17 or equivalent
GENSETS	1 x 28 kW + 1 x 35 kW
RUDDERS	AISI 316 stainless steel
DEADRISE	15°

Accommodations



CABINS	4 (1 owner, 3 VIP)
BERTHS	8 Guests + 4 Crew
HEAD COMPARTMENTS	4 + 1
BEDS	4
CREW	4

Technical Equipment



GENERATOR	1 x Gensets 28kW / 1 x Gensets 35 kW
HYDRAULIC BATHING PLATFORM	Yes
HYDRAULIC GANGWAY	Yes
AIR CONDITIONING	240,000 BTU/h
FIN STABILIZERS	Zero Speed
TEAK DECK	Yes
DESALINATION SYSTEM	250 l/h
BOW PROPELLER	Hydraulic
SHORELINE	230 V / 63 A
CAPSTAN	2 × Electric, 1.5 kW
WATERMAKER	Idromar 250 l/h
PASSERELLE	Yes
ANCHOR WINDLASS	2 × Electric 2.4 kW
BATTERIES CHARGERS	Mastervolt 24 V / 100 A smart chargers

Navigation Devices



AUTOPILOT

Raymarine

DIGITAL ANCHOR SYSTEM

Raymarine

COMPUTER

Raymarine

PLOTTERS

Raymarine

DOMOTIC SYSTEM

Raymarine

JOYSTICK

Raymarine

COMMUNICATION

Raymarine

Tank Capacity



FUEL CAPACITY

9000 l - 2370 US gal

FRESH WATER CAPACITY

1700 l - 450 US gal

BLACK WATER

400 l - 105 US gal

GREY WATER

400 l - 105 US gal

Range and Consumption



APPROX. RANGE AT 24 KN

~380 nm

REPORTED CONSUMPTION AT 24 KN

~540 l/h (≈ 22.5 l/nm)

INDICATIVE LONG-RANGE FIGURE

~1,100 nm @ 10 kn

SPEED (KNOTS)

9,5

10,5

14,0

17,5

20,5

24,0

26,0

28,0

ENGINE REVOLUTIONS (RPM)

1000

1200

1400

1600

1800

2000

2200

2300

TOTAL CONSUMPTION RATE (LT/H)

85

130

200

300

400

540

700

800

Comfort Equipment



SOUND SYSTEM

Yes

WET BAR

Yes

WIFI CONNECTIVITY

Yes

3 STAIRCASES

Interior, exterior and cabins stairs

FLYBRIDGE

Fiberglass

DECK

Teak

High Season

15th June to 15th September

14,000 € / day

95,000 € / week

21% VAT and 35% APA not included in the price.

Low Season

Rest of the months

12,000 € / day

85,000 € / week

21% VAT and 35% APA not included in the price.



MICHISAN

MAIL

javiercaruzzo@gmail.com

PHONE

+34 607 485 286